

UNIESSE GIANT 27 FLY (Natante)

NAUTICA
Pollini



General Data

Shipyard and model: **UNIESSE GIANT 27 FLY**

Length: 9,20 mt

Beam: 3 mt

Engine: 2 x Volvo Penta D3 150 – Diesel – Shaft line

Power: 2 x 150 Hp

Year of construction: 1995

Fuel tank: 400 lt – Water tank: 150 lt

Load of people: 10 people / Berths: 4

Cabin: 1 – Bathroom: 1

Condition: In good condition

Description:

Flybridge Uniesse Giant 27 with spacious dinette with wooden floor, illuminated by the large windows and convertible into 2 beds. In the salon second refrigerator, dining table and kitchen equipped with 2 gas stove, sink, electric oven and refrigerator.

Forward master cabin with double bed and separate bathroom compartment featuring elegant Bisazza Mosaics with electric toilet, sink and shower.

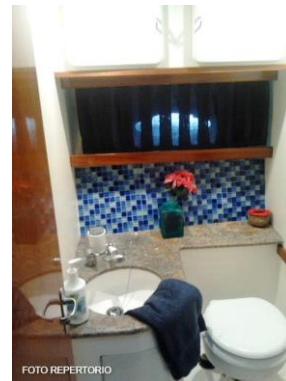
Teak cockpit, comfortable bathing platform and Flybridge with second helm station.

Accessories:

Full indoor and outdoor cushions - 2 TVs - Fully equipped kitchen - Bathroom with Bisazza mosaics - Electric toilet - Shower - Wood floor - Bathing platform - Radio/Stereo - Echo sounder – GPS

Visible: Lago di Iseo

*plus commission. The given information is purely indicative and does not constitute a contractual obligation. Images are for illustrative purpose and may differ from the original. No guarantee for typing errors and omissions.



Price: 38.000,00 € + commission

Pollini S.r.l.
- **FILIALE APRILIA MARITTIMA (UD)** -
Sede & Expo:
Via Pergola - 25080 Moniga d/Garda (BS)
LAGO DI GARDA
P-IVA 03116530985

NAUTICA
Pollini

www.pollininautica.it - info@pollininautica.it

Tel office: +39 0365 671007
Mobile +39 347 9102746 (italian)
Mobile +393473754735 (german/english/french)



Find us on
Facebook